

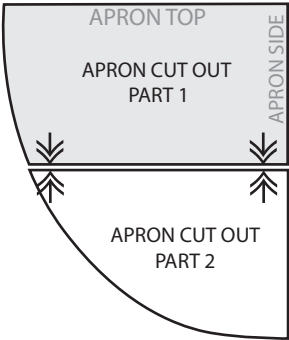
Confirm your printer output is accurate. This bar is exactly 6 inches long.

APRON TOP

APRON CUT OUT PART 1

Copyright ©2009-2017 Sew4Home LLC. All Rights Reserved.

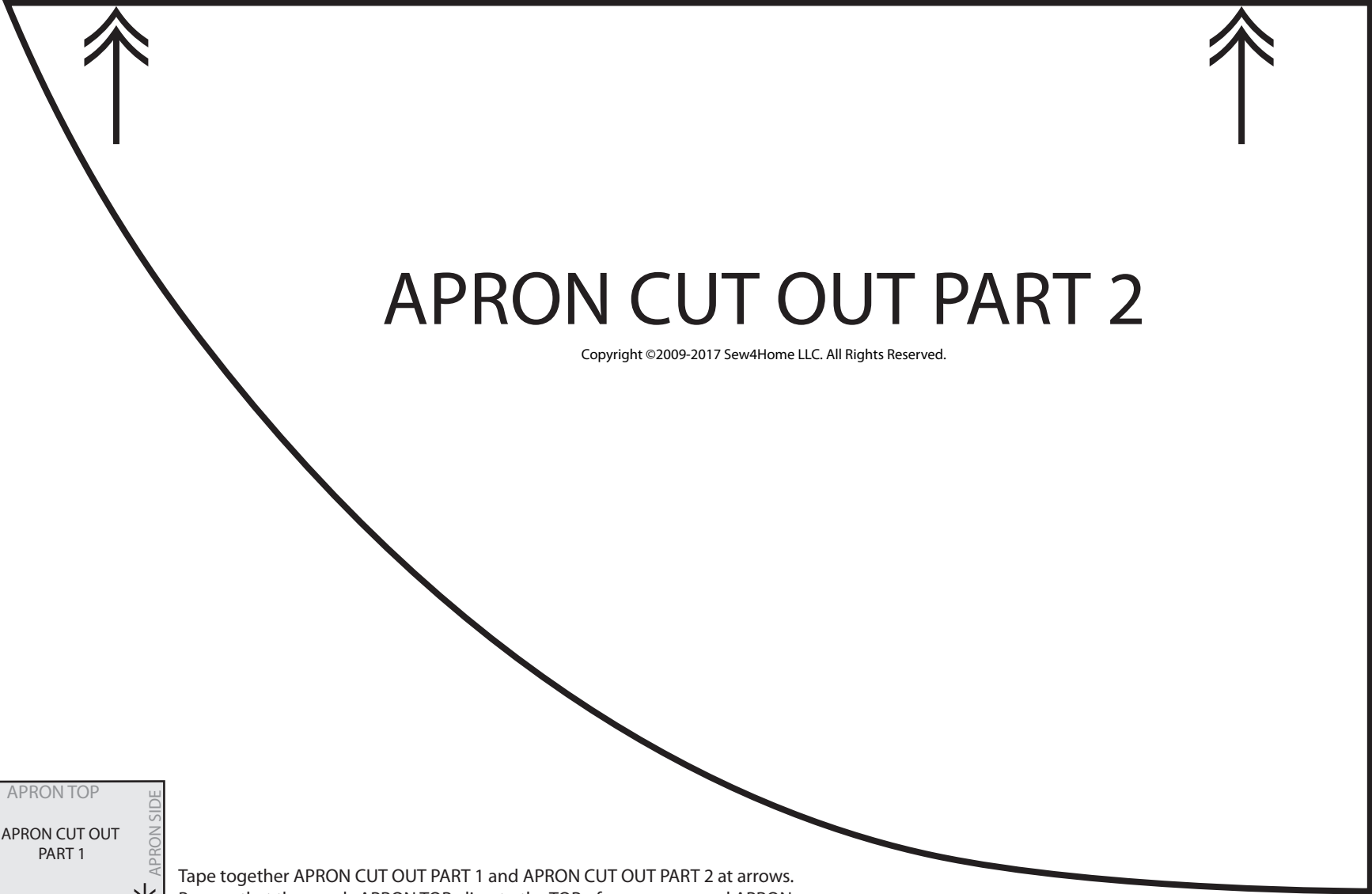
APRON SIDE



Tape together APRON CUT OUT PART 1 and APRON CUT OUT PART 2 at arrows. Be sure that the words APRON TOP align to the TOP of your apron, and APRON SIDE to the SIDE of your apron.

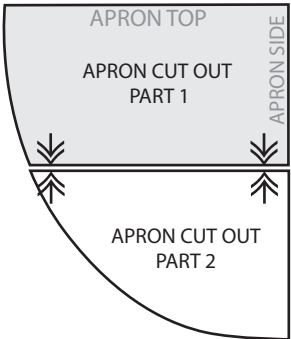


Confirm your printer output is accurate. This bar is exactly 6 inches long.



APRON CUT OUT PART 2

Copyright ©2009-2017 Sew4Home LLC. All Rights Reserved.



Tape together APRON CUT OUT PART 1 and APRON CUT OUT PART 2 at arrows. Be sure that the words APRON TOP align to the TOP of your apron, and APRON SIDE to the SIDE of your apron.