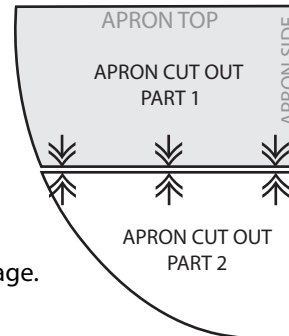


APRON TOP

APRON CUT OUT PART 1

Copyright ©2009-2016 Sew4Home LLC. All Rights Reserved.

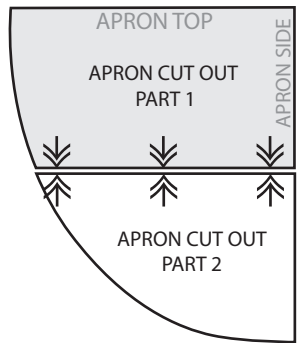
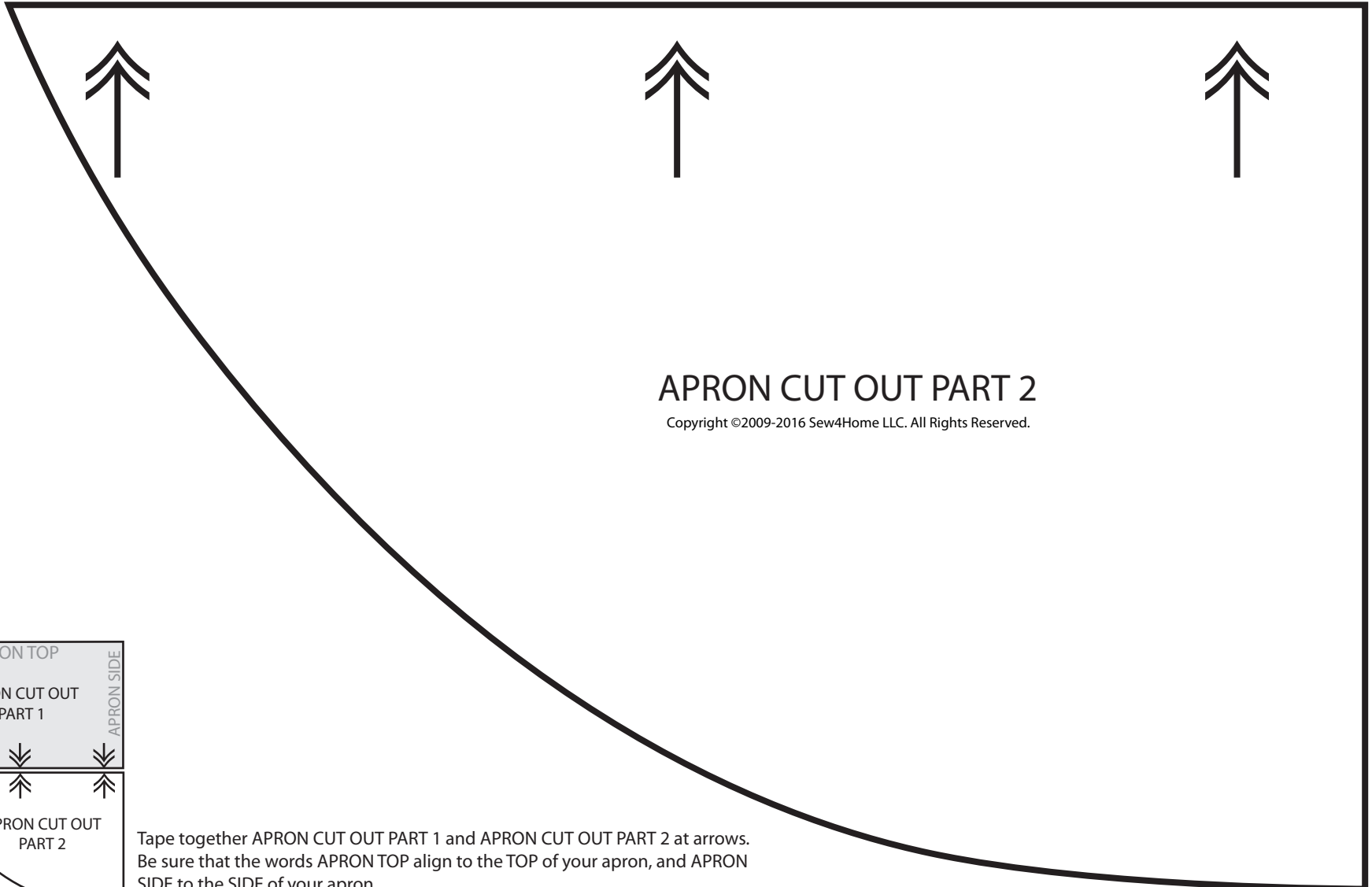
APRON SIDE



Tape together APRON CUT OUT PART 1 and APRON CUT OUT PART 2 at arrows. Be sure that the words APRON TOP align to the TOP of your apron, and APRON SIDE to the SIDE of your apron.

IMPORTANT: Print this .pdf file actual size; do not size or scale to fit page.

Confirm your printer output is correct. This line is 8 inches long.



Tape together APRON CUT OUT PART 1 and APRON CUT OUT PART 2 at arrows. Be sure that the words APRON TOP align to the TOP of your apron, and APRON SIDE to the SIDE of your apron.

IMPORTANT: Print this .pdf file actual size; do not size or scale to fit page.